

HSF

NOTES:

Current Rating:18A
 Voltage Rating:300V
 Contact Resistance:8mlllOhm Max
 Withstand Voltage:AC2000V
 Insulation Resistance:1000Megaohm Min
 Screw Torque: 4.4 lb·in
 Wire range: 12-30AWG
 Operation Temperature:-40°C to +105°C

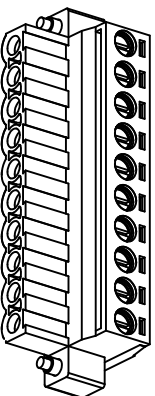
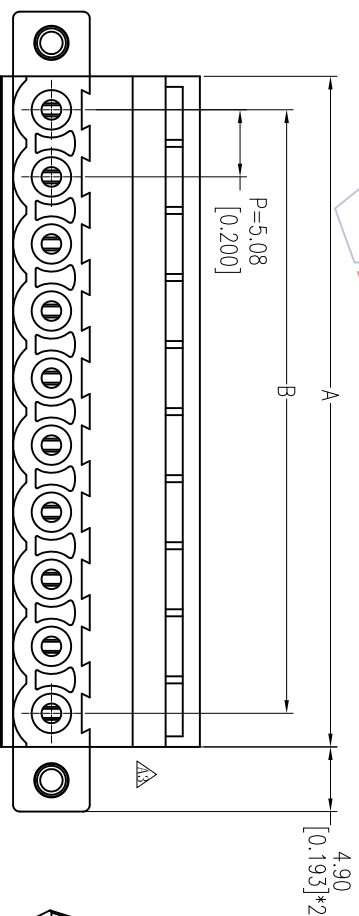
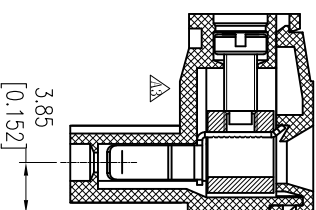
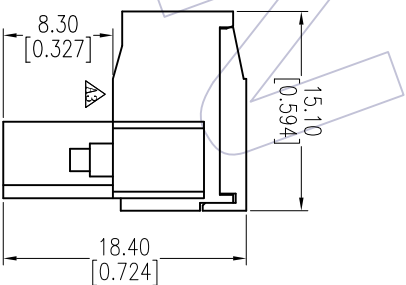
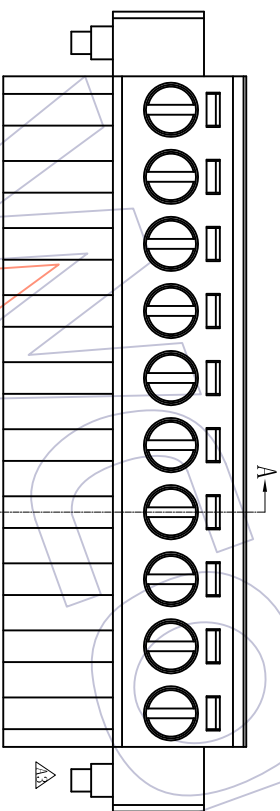
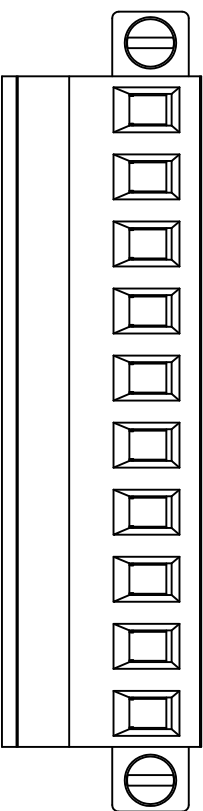
Housing Material:PA66 UL94V-0
 Cover Material:PA66 UL94-V0
 Screw:Steel
 Pin Block:Brass
 Contact:Phosphor Bronze

Ordering Information:

P F 508 - C XX A SM W 1

F=Female Pitch 508=5.08 No. of Pins 02=24P Color Contact Plated Type
 A=Green SM=Silver Tin W=White Screw

13P	66.04±0.30	60.96±0.30	24P	121.92±0.50	116.84±0.50
12P	60.96±0.30	55.88±0.30	23P	116.84±0.50	111.76±0.50
11P	55.88±0.30	50.80±0.30	22P	111.76±0.50	106.68±0.50
10P	50.80±0.30	45.72±0.30	21P	106.68±0.50	101.60±0.50
9P	45.72±0.30	40.64±0.30	20P	101.60±0.50	96.52±0.50
8P	40.64±0.30	35.56±0.30	19P	96.52±0.40	91.44±0.40
7P	35.56±0.20	30.48±0.20	18P	91.44±0.40	86.36±0.40
6P	30.48±0.20	25.40±0.20	17P	86.36±0.40	81.28±0.40
5P	25.40±0.20	20.32±0.20	16P	81.28±0.40	76.20±0.40
4P	20.32±0.20	15.24±0.20	15P	76.20±0.40	71.12±0.40
3P	15.24±0.20	10.16±0.20	14P	71.12±0.40	66.04±0.40
2P	10.16±0.20	5.08±0.10			
PIN	A	B	PIN	A	B



A3	2015/12/15	Modify	Modify
A2	2015/07/15	Modify	Modify
A1	2012/05/17	MODIFY	PM508-01-XX-A-SM → PF508-CXXASMW1
A0	2011/06/08	NEW	NEW
REV	DATE	MODIFICATION DESCRIPTION	CHANGE

OPERATION	DRAW	DATE	SCALE	FIT
XX	JYHuang	2015/12/15	UNIT	mm
XXX	CHECK	DATE	SIZE	inch
XXXX	APPROVE	DATE	SHEET	A4
Angle	PROJ.		1/1	
± 3'				
DIM TOL				

PART NO. PF508-CXXASMW1
 TITLE: 5.08mm Pitch Female Pluggable Terminal Blocks
 Customer NO.

WCON
 Http: www.wcon.com

WCON-Dongguan
 Tel: +86 769 85358920
 Fax: +86 769 85358915
 E-mail: sales@wcon.com

WCON-Kunshan
 Tel: +86 512 57468408
 Fax: +86 512 57468468
 E-mail: sales@wcon.com