

HSF

NOTES:

Withstand Voltage: 500V AC/Minute
 Insulation Resistance: 1000MΩ Min
 Operation Temperature: -55°C to +105°C
 Insulator Material: PBT+30%G.F UL94V-0
 Shell: Cold Roller Steel, Sn Or Ni Plated
 Nut: Brass, Sn Over Ni Plated

Ordering Information

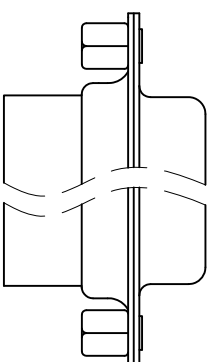
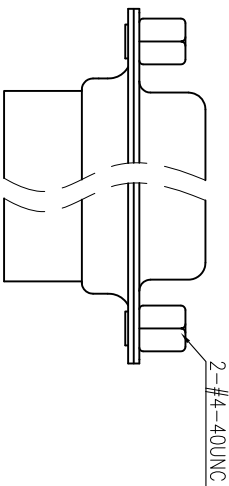
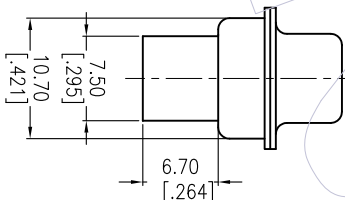
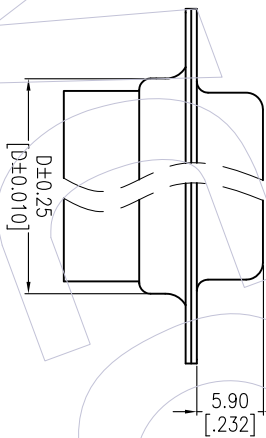
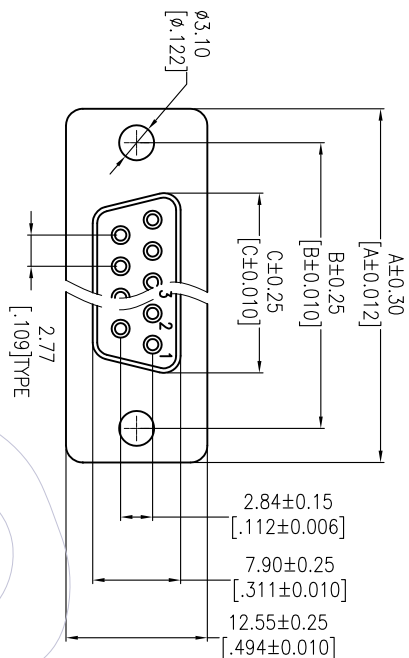
6221-XX F X 00 X 01

No. of Pins: 9P
 15P
 25P
 37P

Type: B=With Back Nut
 F=With Front Nut
 N=Without Nut

Insulator Color: B=Black
 U=Blue

Pins	DIM "A"	DIM "B"	DIM "C"	DIM "D"
09	30.81 [1.213]	24.99 [0.984]	16.33 [0.643]	19.28 [0.759]
15	39.14 [1.541]	33.32 [1.312]	24.66 [0.971]	27.70 [1.091]
25	53.04 [2.088]	47.10 [1.855]	38.38 [1.511]	41.30 [1.626]
37	69.32 [2.729]	63.50 [2.500]	54.84 [2.159]	57.30 [2.256]



6221-XXFF00X01

6221-XXFB00X01

REV	DATE	MODIFICATION DESCRIPTION	CHANGE	OPERATION	DRAW	DATE	SCALE	FIT	PART NO.	TITLE:	WCON-Dongguan	WCON-Kunshan
A1	2014/05/28	Modify 6221-XXXXXXB01 to 6221-XXFX00X01	△	XX ±0.40	All len	2014/05/28	UNIT mm	A4	6221-XXFX00X01	D-SUB FEMALE DUAL ROW CRIMP TYPE	Http: www.wcon.com	
A0	2012/12/03	NEW	-----	X.XXX ±0.15	CHECK		SIZE A4	1/1			Tel: +86 769 85358920	Tel: +86 512 57468408
REV	DATE	MODIFICATION DESCRIPTION	CHANGE	Angle ± 3'	APPROVE	DATE	SHEET 1/1	PROJ.	Customer NO.		E-mail: sales@wcon.com	E-mail: sales@wcon.com

WCON

WCON-Dongguan
 Tel: +86 769 85358920
 Fax: +86 769 85358915
 E-mail: sales@wcon.com

WCON-Kunshan
 Tel: +86 512 57468408
 Fax: +86 512 57468468
 E-mail: sales@wcon.com